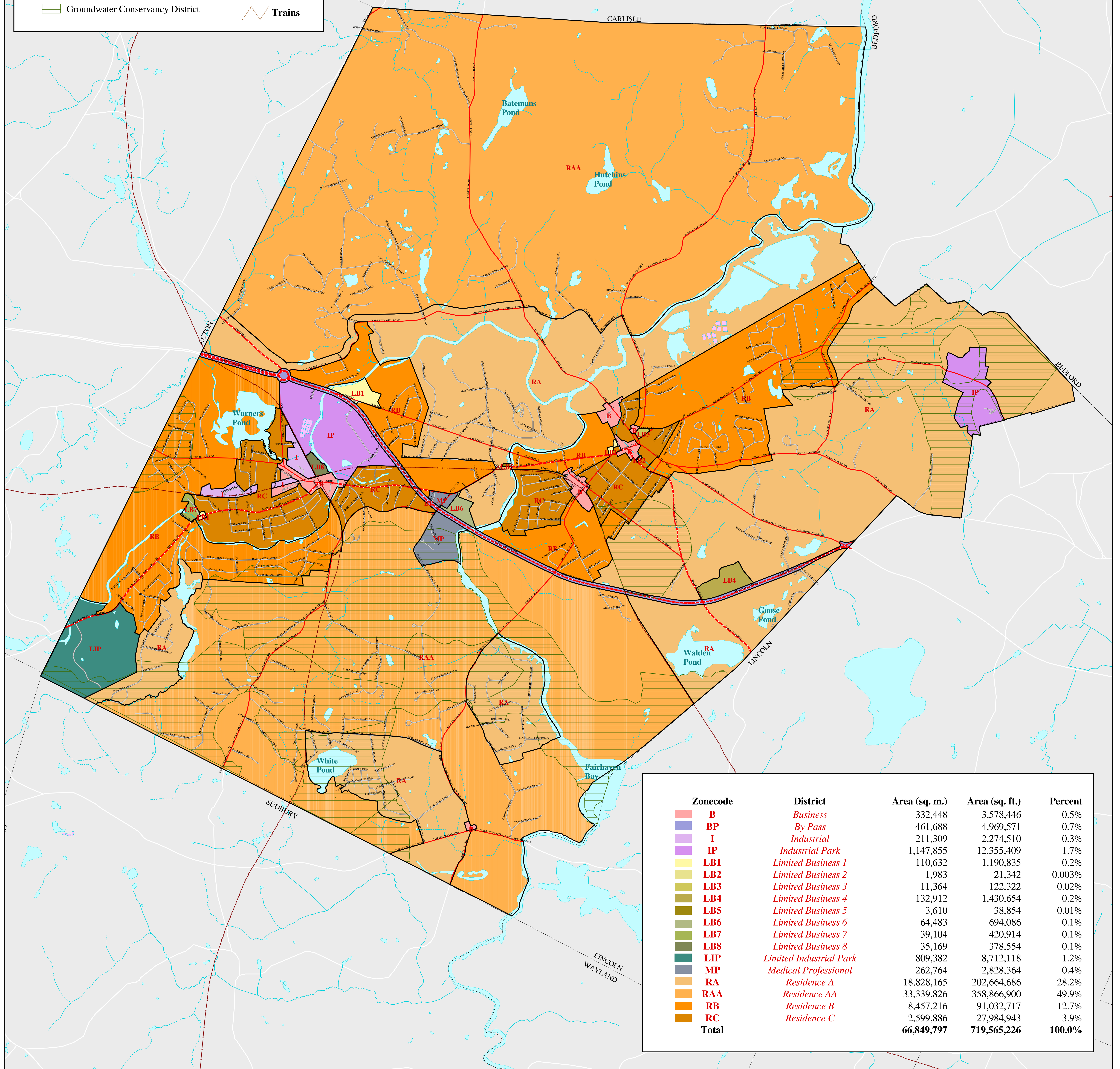
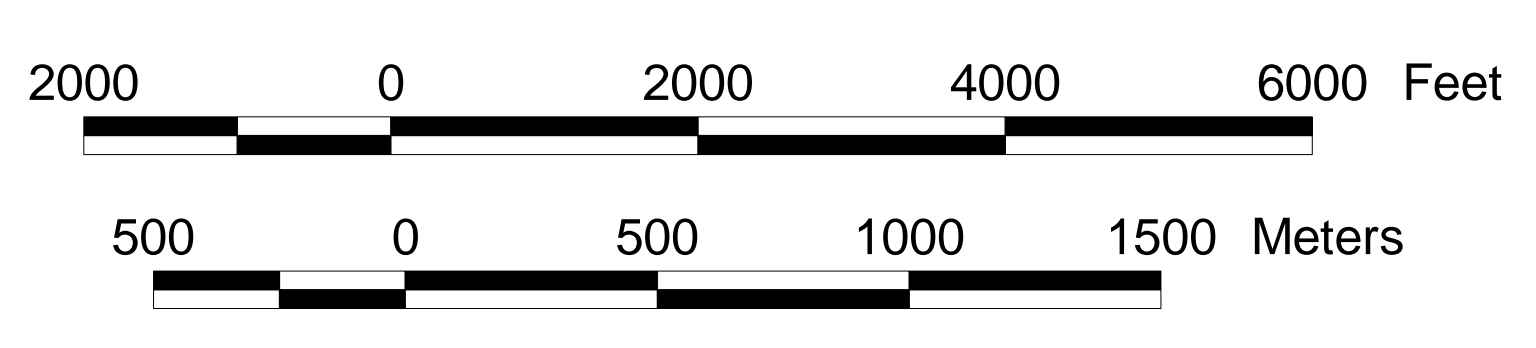
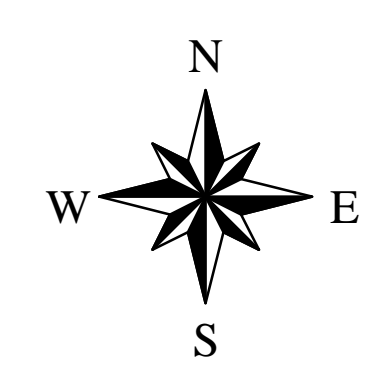
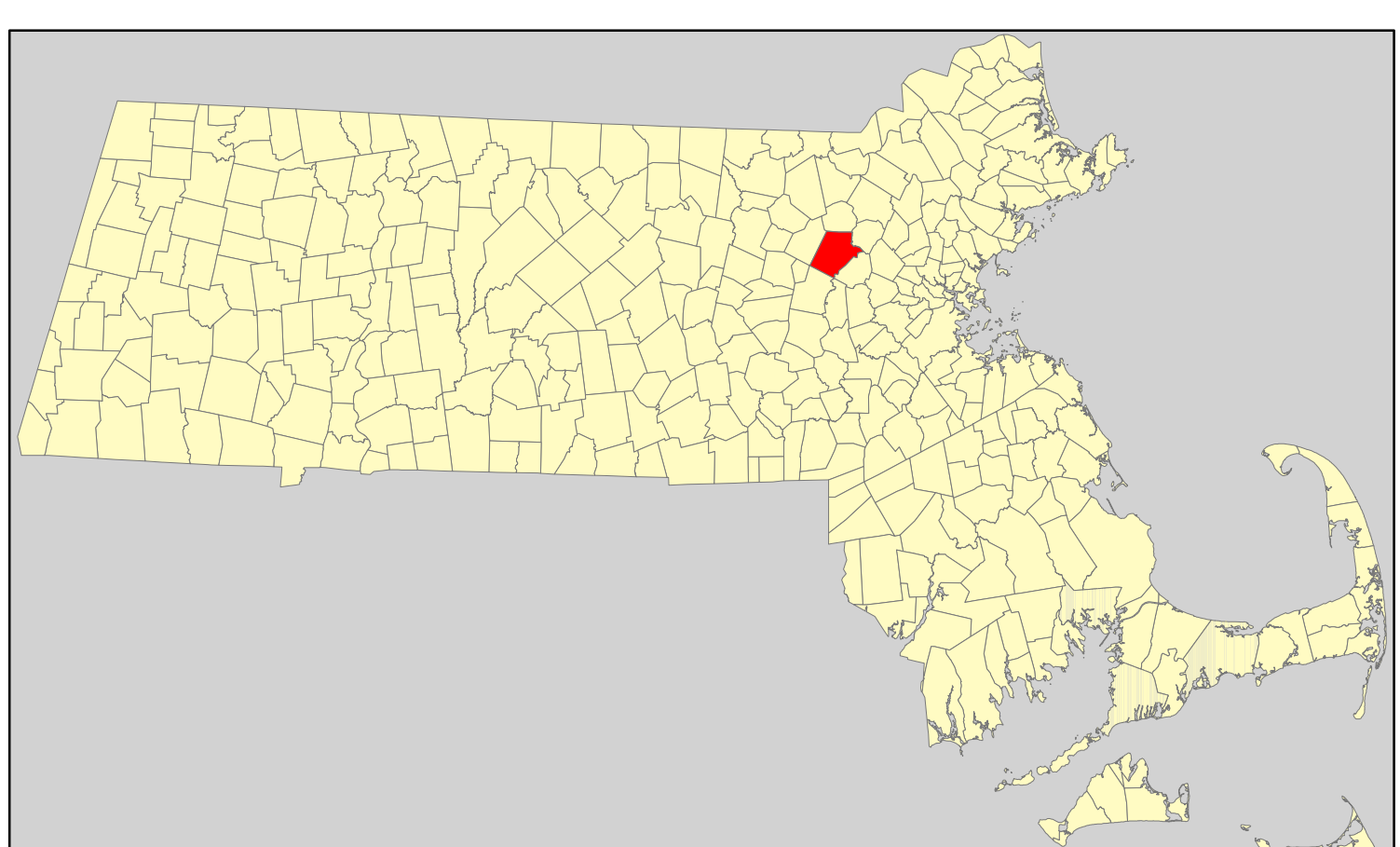


MAP 5: Zoning Town of Concord

- Water Bodies**
- Water Bodies
 - Streams
 - Intermittent Streams
 - Groundwater Conservancy District
- Roads**
- Local
 - Interstate
 - Arterial
 - Collector
 - Trains



Zonecode	District	Area (sq. m.)	Area (sq. ft.)	Percent
B	Business	332,448	3,578,446	0.5%
BP	By Pass	461,688	4,969,571	0.7%
I	Industrial	211,309	2,274,510	0.3%
IP	Industrial Park	1,147,855	12,355,409	1.7%
LB1	Limited Business 1	110,632	1,190,835	0.2%
LB2	Limited Business 2	1,983	21,342	0.003%
LB3	Limited Business 3	11,364	122,322	0.02%
LB4	Limited Business 4	132,912	1,430,654	0.2%
LB5	Limited Business 5	3,610	38,854	0.01%
LB6	Limited Business 6	64,483	694,086	0.1%
LB7	Limited Business 7	39,104	420,914	0.1%
LB8	Limited Business 8	35,169	378,554	0.1%
LIP	Limited Industrial Park	809,382	8,712,118	1.2%
MP	Medical Professional	262,764	2,828,364	0.4%
RA	Residence A	18,828,165	202,664,686	28.2%
RAA	Residence AA	33,339,826	358,866,900	49.9%
RB	Residence B	8,457,216	91,032,717	12.7%
RC	Residence C	2,599,886	27,984,943	3.9%
Total		66,849,797	719,565,226	100.0%



Commonwealth of Massachusetts
Executive Office of Environmental Affairs

Jane Swift
Governor

Bob Durand
Secretary

Presented to the Community of
Concord, Spring 2001