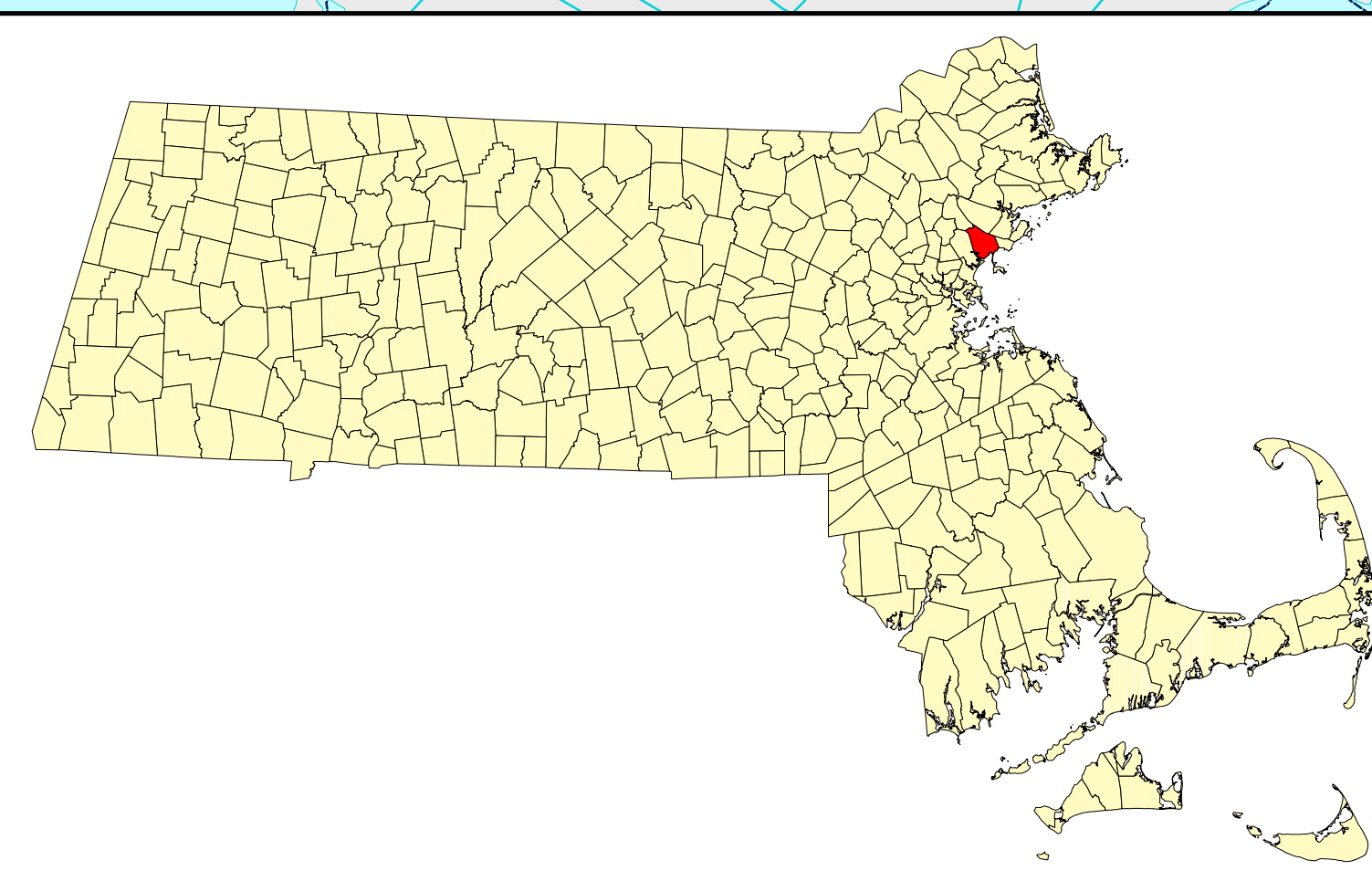
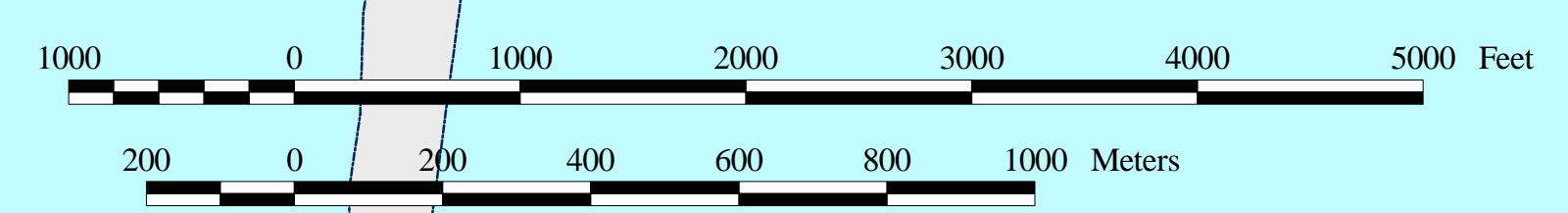
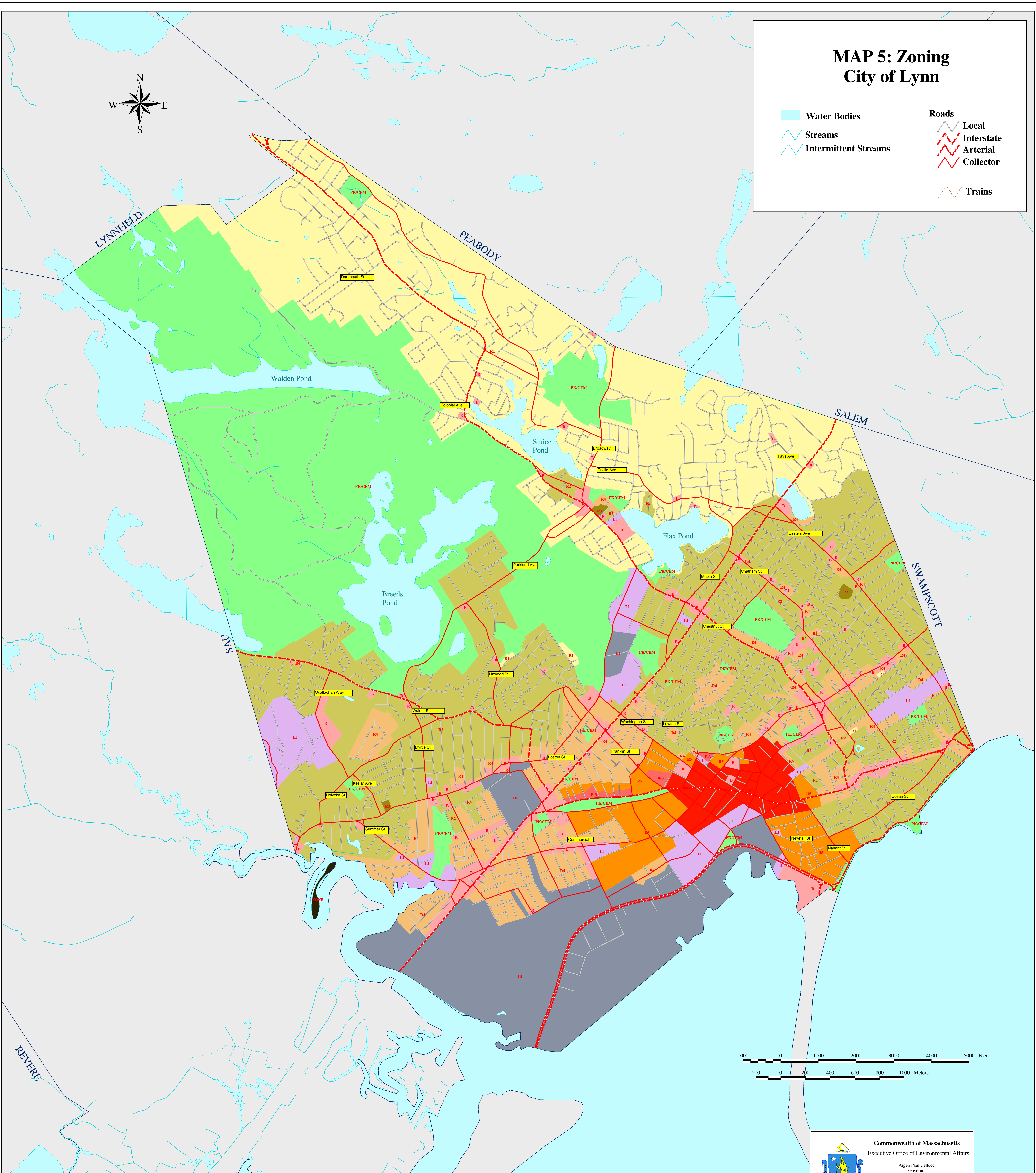
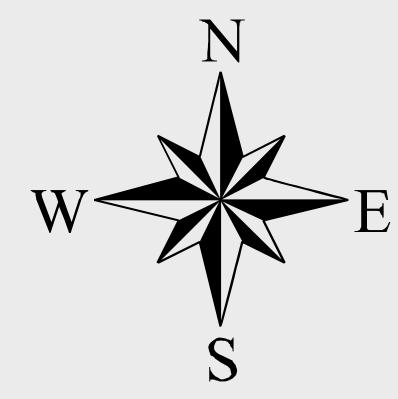


# MAP 5: Zoning City of Lynn

- Water Bodies**
- Streams
  - Intermittent Streams
- Roads**
- Local
  - Interstate
  - Arterial
  - Collector
- Trains**



| ZONECODE     | DISTRICT                 | AREA (SQ FT)       | PERCENT     |
|--------------|--------------------------|--------------------|-------------|
| R-1          | Single Residence         | 65,775,417         | 20.6%       |
| R-2          | General Residence        | 72,471,374         | 22.7%       |
| R-3          | Apartment House Class I  | 245,636            | 0.1%        |
| R-4          | Apartment House Class II | 23,944,803         | 7.5%        |
| R-5          | High Rise Building       | 8,597,607          | 2.7%        |
| B-3          | Business Class III       | 611,729            | 0.2%        |
| B            | Business                 | 9,677,210          | 3.0%        |
| CBD          | Central Business         | 4,995,538          | 1.6%        |
| LI           | Light Industrial         | 9,526,134          | 3.0%        |
| HI           | Heavy Industrial         | 28,618,529         | 9.0%        |
| PK/CEM       | Park/Cemetery            | 94,364,912         | 29.6%       |
| <b>Total</b> |                          | <b>318,828,888</b> | <b>100%</b> |

Commonwealth of Massachusetts  
Executive Office of Environmental Affairs

Argon Paul Cellucci  
Governor

Jane Swift  
Lt. Governor

Bob Dorrard  
Secretary

Presented to the Community of  
Lynn, Winter 2001

**MASS GIS** Massachusetts Geographic Information System  
Produced by the Metropolitan Area Planning Council GIS Lab.  
60 Temple Place, Boston, MA 02111 (617) 451-2770

Coordinate Reference System: Massachusetts State Plane meters (NAD 83)  
Date Printed: March 15, 2001